

# High Power Laser Diode Laser Engine-Q Package



## Part Number: LEQ-126

High Power Laser Engine-Q Package  
Multi-Mode Fabry-Perot Laser Diode  
Wavelength at 1450nm



## Features

- High Output Power
- High Dynamic Range
- High Efficiency
- Laser Engine-Q Package
- Cost Effective

## Application

- Home Medical



SemiNex delivers the highest available power at infrared wavelengths between 12xx and 19xx nm. When necessary, we will further optimize the design of our InP & GaSb laser chips to meet our customers' specific optical and electrical performance needs. Diodes, bars and packages are tested to meet customer and market performance demands. Typical results and packaging options are shown. Contact SemiNex for additional details or to discuss your specific requirements.

# High Power Laser Diode Laser Engine-Q Package



## Specification

LEQ-126



Optical	Symbol	Typ.	Units
Center Wavelength	$\lambda_c$	1450	nm ( $\pm 20$ )
Output Power (CW)*	$P_{out}$	1.6	watts ( $\pm 10\%$ )
Spectral Width	$\delta\lambda$	10	nm 3dB
X-Axis Divergence*	$\Theta_X$	10	deg FMHW
Y -Axis Divergence*	$\Theta_Y$	2	deg FWHM
Electrical	Symbol		Units
Power Conversion Eff.	$\eta$	21	%
Operating Current	$I_{op}$	7	A
Threshold Current	$I_{TH}$	0.5	A
Operating Voltage	$V_{op}$	1.4	V
Fan	Symbol		Units
Voltage (DC)	VDC	5	V
Power	watts	0.4	W
Air Flow	CFM	3	cubic feet/minute
		Range	
Operating Temp.**		-40 to 60	$^{\circ}\text{C}$
Storage Temp.		-40 to 80	$^{\circ}\text{C}$

\*Refer to Mechanical drawing.

\*\*Laser engine includes FAC Lens and Cooling Fan

\*Specified values are rated at a constant heat sink temperature of 20 $^{\circ}\text{C}$ .

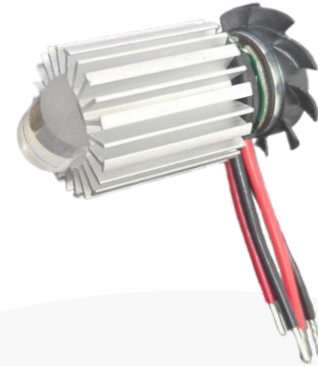
\*\*High temperature operation will reduce performance and MTTF.  
Unless otherwise indicated all values are nominal.

# High Power Laser Diode Laser Engine-Q Package

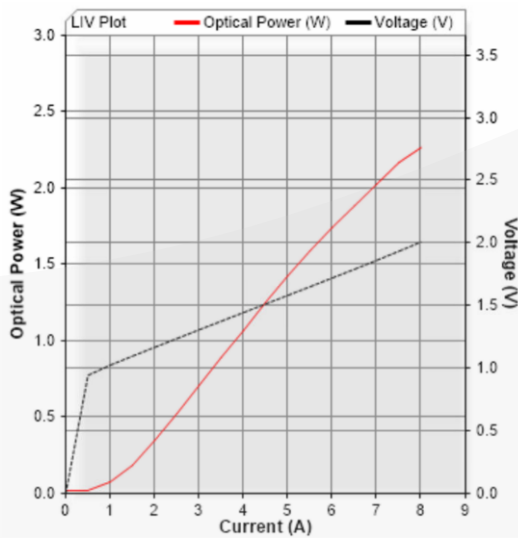


## SemiNex Laser Diodes LEQ-126

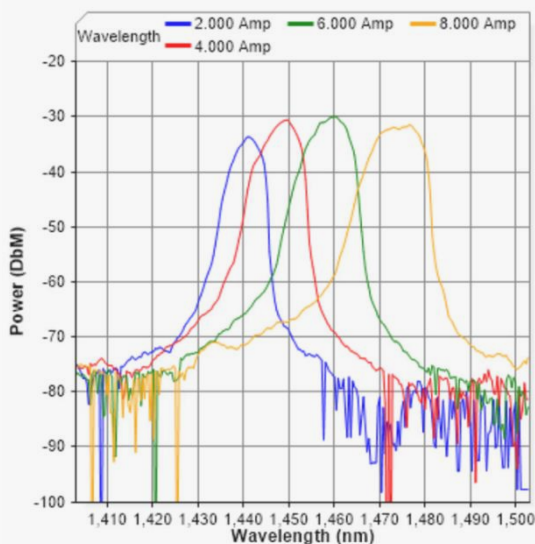
### Graphs & Data



### Typical LEQ L-I-V Characteristics



### Typical LEQ Output Spectrum



Site 201, Danvers, MA 01923 • 978-326-7700 • sales@seminex.com

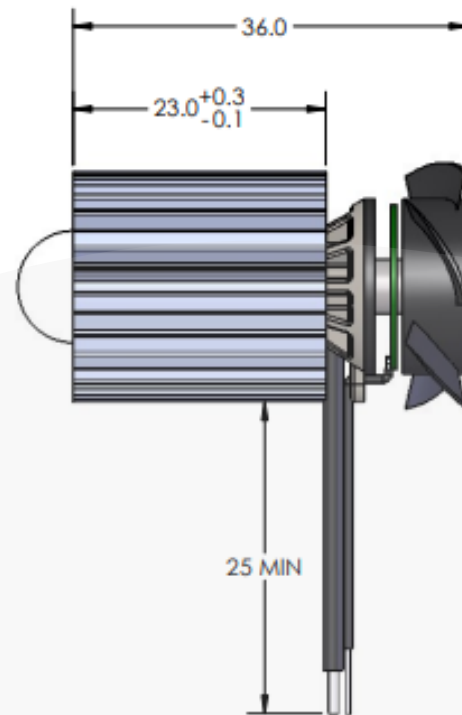
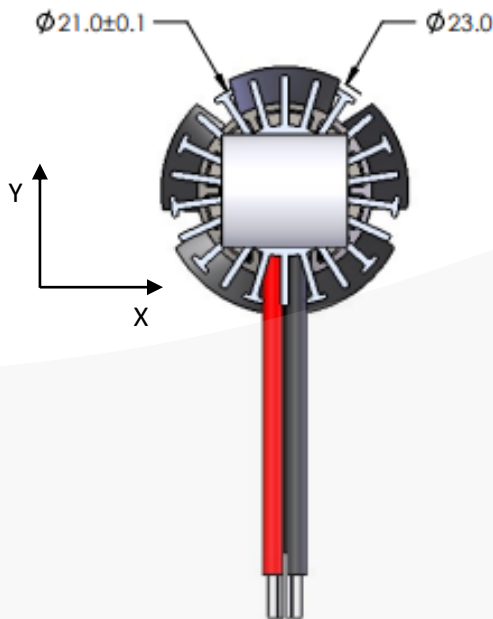
# High Power Laser Diode Laser Engine-Q Package



## Mechanical Drawing



PIN OUT:	
1.	LD Anode (+), #20 AWG
2.	LD Cathode (-), #20 AWG
3.	FAN (+5V), #28 AWG
4.	FAN (-), #28 AWG



All statements, technical information and recommendations related to the product herein are based upon information believed to be reliable or accurate. The accuracy or completeness herein is not guaranteed, and no responsibility is assumed for any inaccuracies. The user assumes all risks and liability whatsoever in connection with the use of a product or its application. SemiNex Corporation reserves the right to change at any time without notice the design, specification, deduction, fit or form of its described herein, including withdrawal at any time of a product offered for sale herein. Users are encouraged to visit [www.seminex.com](http://www.seminex.com) for the latest data. SemiNex Corporation makes no representations that the products herein are free from any intellectual property claims of others. Please contact SemiNex for more information. 2016 SemiNex Corporation

