

LEDZERO SOLIDCURE 2

INTEGRATION TECHNOLOGY

Slim, Compact, High Output, Water cooled, UV LED Solutions

LEDZero Solidcure 2 with its class leading dose and unmatched linearity of output can surpass any other water cooled unit of this type.

Slim and ultra compact architecture enables easy integration while the water cooled feature will provide precision high output. Benefitting from the latest in semi-conductor developments Solidcure 2 also offers a highly efficient UV LED solution further reducing energy and cooling input.

LEDZero Solidcure 2 is fully scalable length, so can be tailored to meet even the widest of UV LED requirements in a variety of different applications.

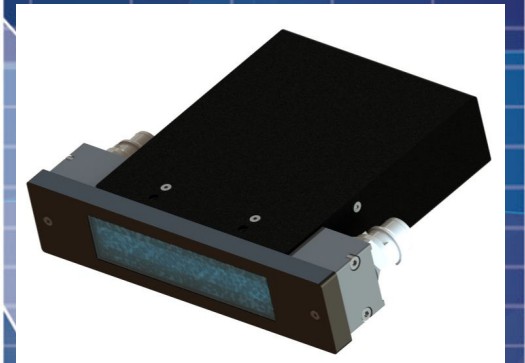
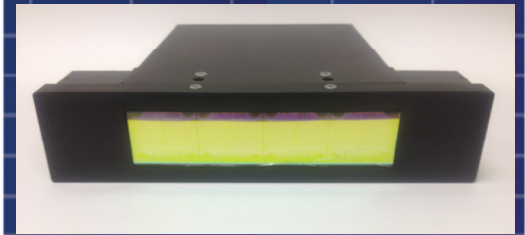
Typical applications for the LEDZero Solidcure 2 include:

- High speed inkjet printing
- High speed roll to roll flexographic and offset printing
- Converting
- Curing of paints, lacquer and heavy coating films

LEDZero Solidcure 2 can be adapted for many more applications, if your application is not listed then please do not hesitate to contact us for further information.

LEDZero Solidcure 2 Standard Specifications

- Up to 16W/cm²
- Available in 4 alternative wavelengths
- Solid output (non-pulse width modulated)
- Class leading dose
- Fully scalable in length
- Field replaceable modules offering extended service life
- Driver electronics fully integrated within the lamp head
- Switch mode power supply unit which ensures world-wide compatibility
- Variable Power
- Addressable as standard, offering width switching or zone selection
- 3 Alternative models to cover the widest range of applications



LEDZero Solidcure 2



LEDZero Solidcure 2

Lamp Head Specifications

Power or Intensity up to 16W/cm² (model dependant)

Alternative wavelengths (all models); 405nm; 395nm; 385nm & 365nm

Standard models from 60mm – 540mm in 30mm increments, longer lengths available upon request.

Dimensions; W 44m x H 162mm x L (Solidcure 2 & Solidcure 2 N)
W 75m x H 157mm x L (Solidcure 2 HD)

Emitting window width: 25 mm (Solidcure 2 & Solidcure 2 N)
46 mm (Solidcure 2 HD)

Fully functional modular driver cards in the head (head only option available)

Width or zone switching in 30mm increments / modules

Power Supply Specifications

Variable Power 0 – 10 Vdc

48Vdc, compliant with low voltage directory

Switch-mode Power Supply 50/60 Hz, 200-250vac. (90-110vac available upon request)

Fully CE and RoHS compliant

LEDZero Solidcure 2 N

LEDZero Solidcure 2 N model, offers the same features and benefits, with a lower output of up to 8W/cm², providing a cost effective solution for less demanding applications.

LEDZero Solidcure 2 HD

LEDZero Solidcure 2 HD, offers the same features and benefits, with twice the dose of the standard unit to meet even the most demanding requirements.

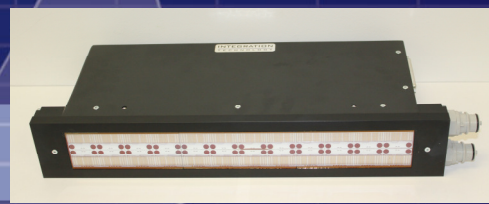
Due to the class leading output, LEDZero Solidcure 2 HD brings to the market a UV LED solution for applications, until now not possible.



LEDZero Solidcure 2 N



LEDZero Solidcure 2 HD



FineSensing

ファインセンシング株式会社
〒273-0025千葉県船橋市印内町568-1-3
TEL: 047-495-9120 FAX: 037-495-9121
URL: <http://finesensing.com>
E-mail: inquiry@finesensing.com